
ConstructSim i-model Publisher



Last Updated: April 23, 2020

Table of Contents

Chapter 1: ConstructSim i-model Publisher	3
Overview	3
Software Requirements	3
Publishing iModels	4
To Save Your Work	4
To Publish the iModel Using the End-to-End Data Run	4
To Publish the iModel Using the Intra-Week Workflow	5
Opening iModels	6
To Open the iModel with Bentley Navigator in Project Share	6
TBD: remove or not? To Open the iModel Using the ConstructSim Work Package Server	7
Troubleshooting Licensing Issues	8
Activating ConstructSim i-model Publisher	8
License Management Tool Dialog	9
Using the Product Activation Wizard	12
Copyright	14

1

ConstructSim i-model Publisher

Overview

The ConstructSim i-model Publisher allows you to create an iModel of the Virtual Construction Model (VCM) using ConstructSim Executive. You can then open this iModel in Bentley Navigator.

An iModel is a container for multi-discipline information published from known sources in a known state at a certain point in time. The iModel combines all the graphics and business data intelligence, as defined by the design application, into a single deliverable container for distribution. Because an iModel optimizes the business data, the result is decreased file size and easier navigation. An iModel created using ConstructSim i-model Publisher has an .IMODEL extension.

The iModel can be published from ConstructSim Executive using the **Publish model for Bentley Navigator** node. You can publish an iModel without performing the complete End-to-End Data Run.

Software Requirements

In order to create an .imodel file, you need to install ConstructSim Executive and be a Data Processing Administrator with permission to execute Managed Commands in ConstructSim Executive.

In order to open an .imodel file published by ConstructSim i-model Publisher, you need to install Bentley Navigator.

In order to create an .imodel file, you also need to have ConstructSim i-model Publisher installed on the Data Processing Server machine.

Software Downloads

To download the installers, go to <https://connect.bentley.com/> and click the Software Download tile.

Download (<https://softwaredownloads.bentley.com/en/ProductDetails/2590>) and install ConstructSim i-model Publisher 06.01.04.04 on the data processing machine.

On the client machine, download (<https://softwaredownloads.bentley.com/en/ProductDetails/2545>) and install desktop Navigator10 10.02.01.124.

- If the Navigator installer requires install KB2999226, download it from <https://support.microsoft.com/en-us/help/2999226/update-for-universal-c-runtime-in-windows>.
- If you get the error below, install .NET 4.6.1 from <https://www.microsoft.com/en-us/download/details.aspx?id=49981>.



Publishing iModels

The Data Processing Administrator uses ConstructSim Executive to set up the iModel publishing workflow configuration.

To Save Your Work

Before publishing an iModel, users must save their work by synchronizing their changes to the server.

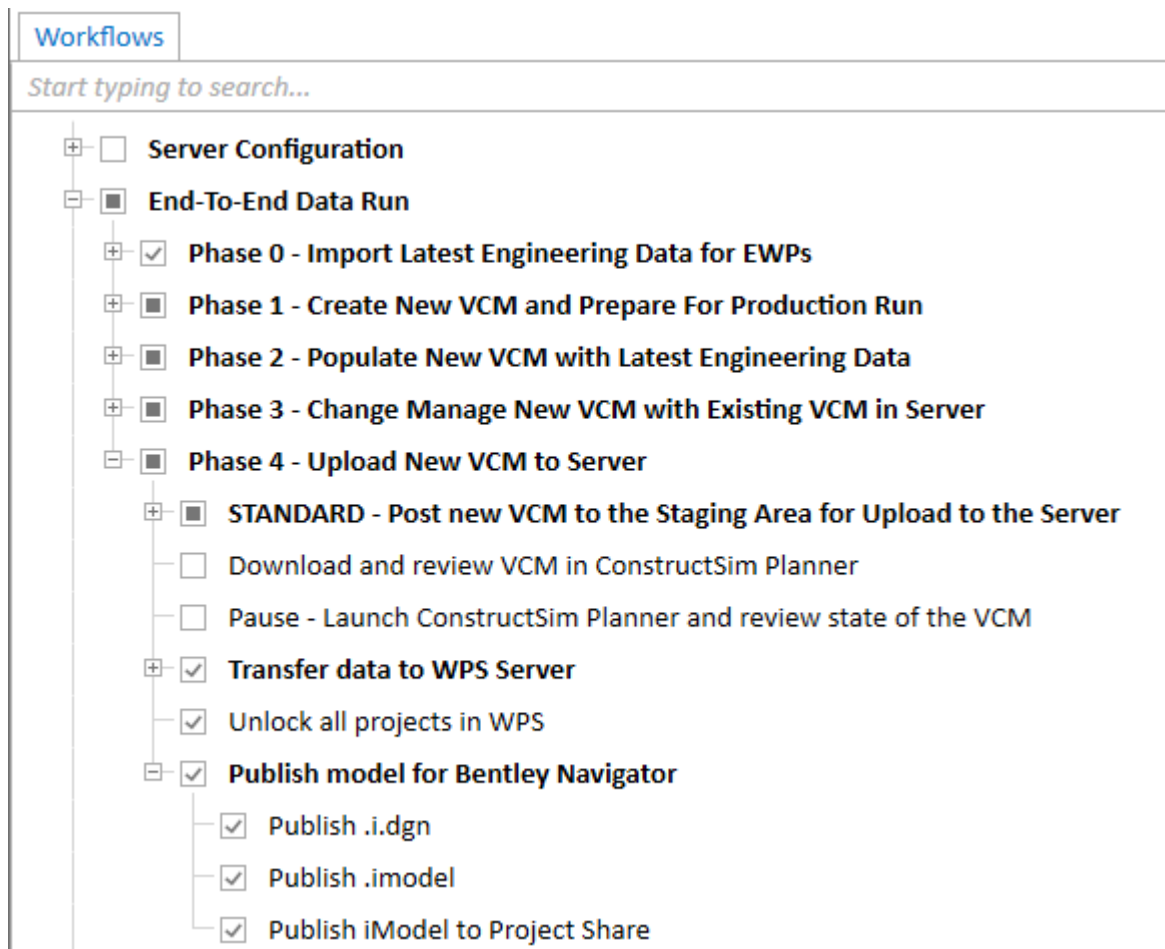
1. In ConstructSim Planner, from the ConstructSim menu, select **Synchronization > Synchronize changes**.

To Publish the iModel Using the End-to-End Data Run

1. On the Data Processing Administrator machine, open the ConstructSim Executive Client.
2. From the menu bar, open your project.
3. In the Workflows panel, go to **ConstructSim Project > End-to-End Data Run > Phase 4 - Upload New VCM to Server > Publish model for Bentley Navigator** and expand the node.

ConstructSim i-model Publisher

Publishing iModels



4. Enable the **Publish .i.dgn**, **Publish .imodel** and **Publish iModel to Project Share** commands.
5. Right-click the End-to-End Data Run node and select Run.

At the completion of the End-To-End Data Run, the iModel is created and published in the Project Share.

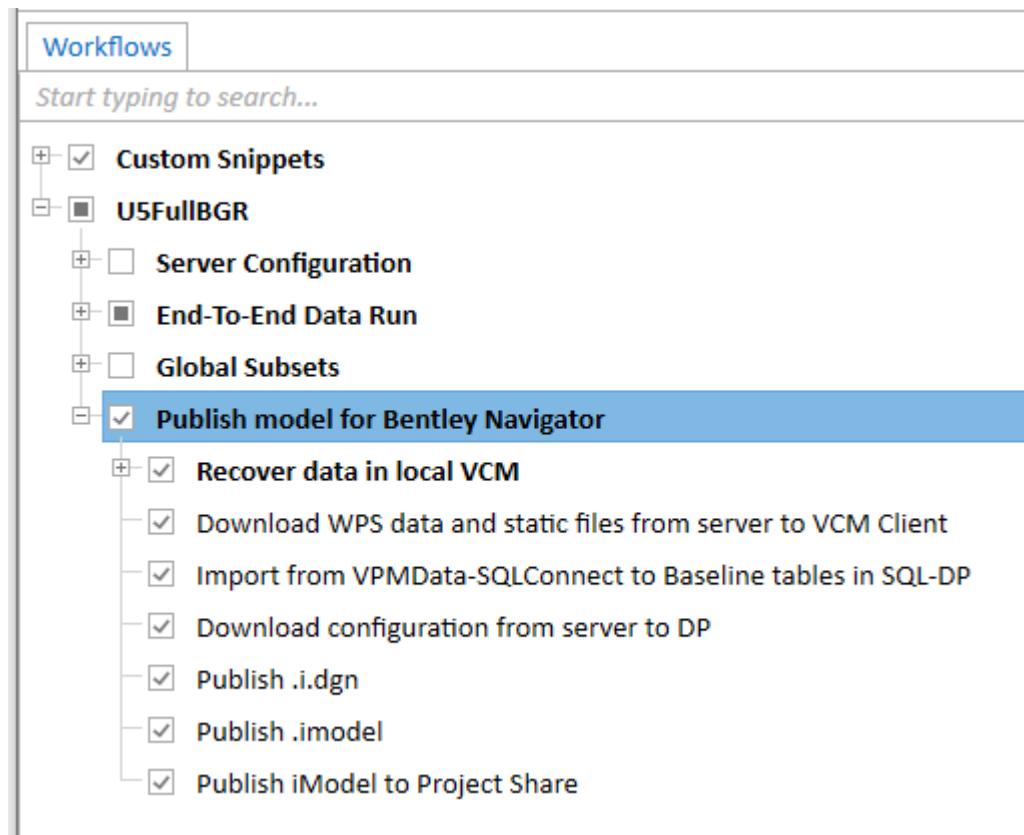
6. Open the iModel with Bentley Navigator Update 10 from Project Share.

To Publish the iModel Using the Intra-Week Workflow

1. On the Data Processing Administrator machine, open the ConstructSim Executive Client.
2. From the menu bar, open your project.
3. In the Workflows panel, go to **ConstructSim Project > Publish model for Bentley Navigator**.

ConstructSim i-model Publisher

Opening iModels



4. Enable the **Publish model for Bentley Navigator** node.
5. Right-click **Publish model for Bentley Navigator** and select Run.
The iModel (.imodel) is created and published in the Project Share.
6. Open the iModel with Bentley Navigator Update 10 from Project Share.

Opening iModels

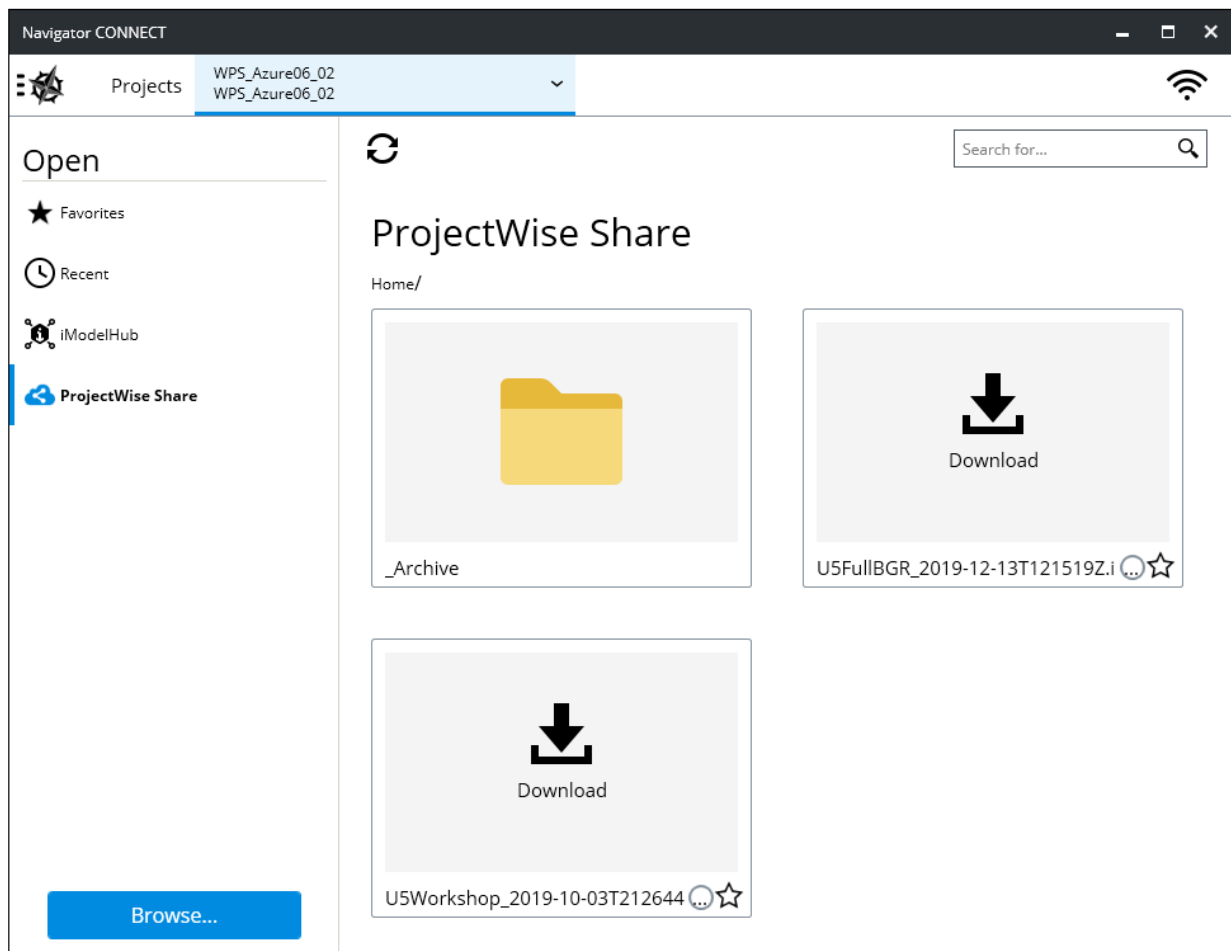
You can open a published iModel with Bentley Navigator through Project Share.

To Open the iModel with Bentley Navigator in Project Share

1. In Bentley Navigator, open the CONNECT project.
2. In the left pane, select ProjectWise Share.
A list of the published iModels displays.

ConstructSim i-model Publisher

Opening iModels



3. Click the iModel you want to download.
The iModel opens in Bentley Navigator.

TBD: remove or not? To Open the iModel Using the ConstructSim Work Package Server

1. From the ConstructSim Work Package Server Home Page's Project info panel, click Published models.
A list of files display.

ConstructSim i-model Publisher

Troubleshooting Licensing Issues

Published models

<input type="checkbox"/>	Name	Type	Revision	Date uploaded	Uploaded by	
<input type="checkbox"/>	projatpU2Set5.imodel	i-model	23	9/13/2016	ADMIN	
<input type="checkbox"/>	projatpU2Set5.i.dgn	i-model	11	8/16/2016	ADMIN	

Download selected Show historic revisions

Page size: 10 2 items in 1 pages

2. Click the *.imodel file you want to open.
You are asked if you want to open or save the file.



3. Click Open.
If Bentley Navigator is installed, the iModel opens in Bentley Navigator.

Troubleshooting Licensing Issues

Note: These licensing issues refer to the Data Processing Server system.

The **DPEXporter.exe** log file is used to diagnose problems in the ConstructSim i-model Publisher. This file can be found in the %AppData%\Bentley\Logs folder. This log file is created automatically and logs any licensing issues that occur. If there are licensing issues, ConstructSim Executive will not be able to publish the iModel.

A sample of the file is as follows:

```
2016-10-06 07:14:14,517 FATAL [0x00002910] FATAL ConstructSim.DP.Exporter - ERROR: Failed to obtain proper license for ConstructSim i-model Publisher. Please run either the Activation Wizard to enter your license server information or the License Management Tool to check your license status.
```

Follow the instructions in the log file to correct the problem. See the [Activating ConstructSim i-model Publisher](#) (on page 8) section for more information on licensing and activating the product.

Activating ConstructSim i-model Publisher

Note: This information on Activating ConstructSim i-model Publisher refers only to the Data Processing Server system.

Product activation is achieved by connecting to a SELECTserver, receiving verification that your SELECTserver Name and Activation Key are correct, and successfully posting usage logs. Product activation is not the same as checking out a license. After initial configuration, ConstructSim i-model Publisher automatically and transparently tries to activate each time it runs, and runs unconstrained for a period of seven days after its last successful activation.

Note: If the workstation on which ConstructSim i-model Publisher is running does not have regular network access for periodic activation (at least every seven days), then consider utilizing a checked-out license. Checked-

ConstructSim i-model Publisher

Activating ConstructSim i-model Publisher

out licenses are considered to be in full-time use and ConstructSim i-model Publisher will not attempt to post usage for the duration of the license term.

The [License Management Tool dialog](#) is used to check out licenses. The [Using the Product Activation Wizard](#) (on page 12) is designed to step you through the product activation process.

To open the License Management Tool dialog, go to the Start menu, search for "license," and click the SELECT License Tool.

To open the Product Activation Wizard, in the License Management Tool dialog, select Tools > Product Activation Wizard.

License Management Tool Dialog

Used to check out application and program licenses that are under concurrent license control of the SELECTserver License Manager to systems that are not continually connected to a network with access to SELECTserver, such as workstations, laptops, and portables. This enables users dependent on the SELECTserver License Manager (LM) concurrent licensing feature to use LM-managed application licenses on remote systems for extended periods of time.

The remotely used application can reside on the remote system continually, even when its license is not active. The only physical requirement for use is that the remote system is connected to a network with access to SELECTserver during the time that the license is being requested and transferred from the License Management Tool utility.

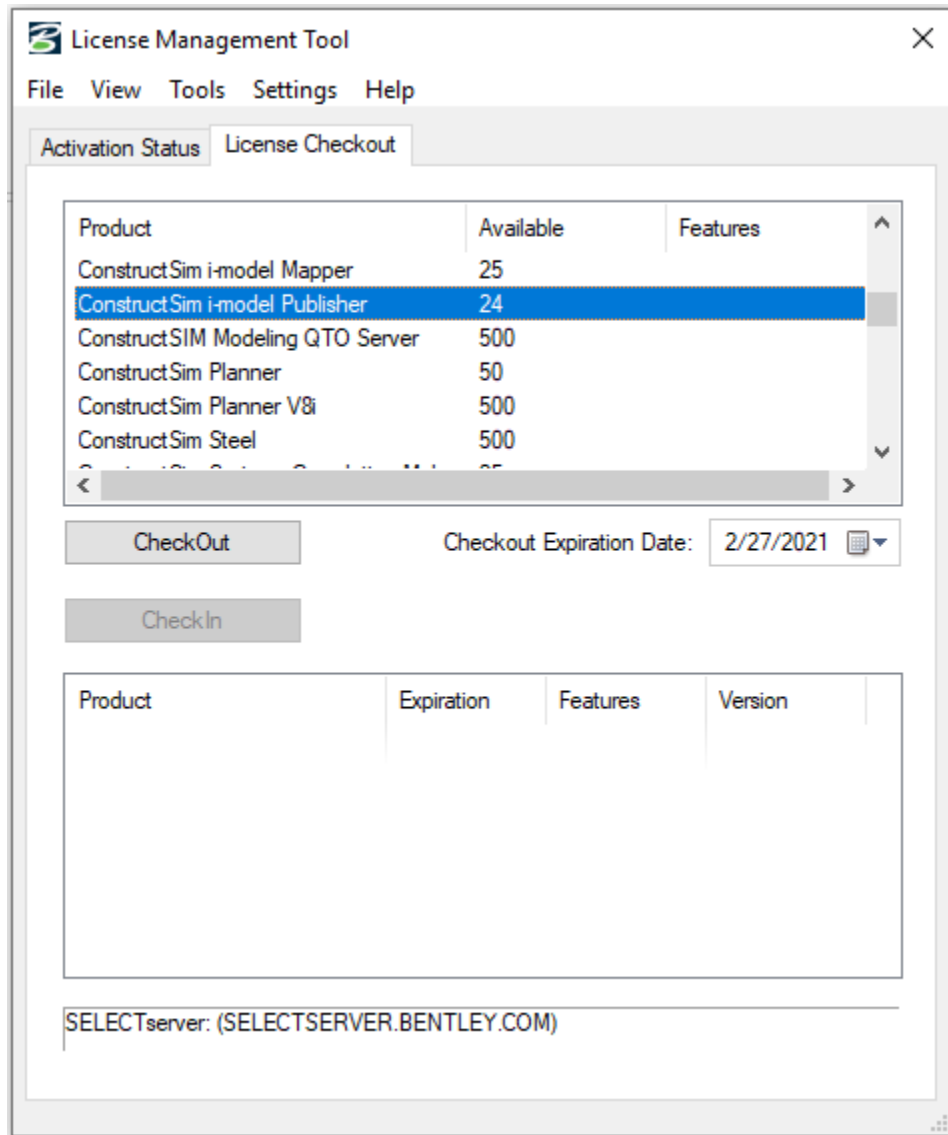
Once the license is checked out, the system can be disconnected from the network, and the application for which the license was checked out can be operated at anytime during the valid checkout period. After the checkout period has expired, the application will no longer operate until a new license for that application is checked out. If the application is no longer needed, either temporarily or permanently, the license can be checked in, making it available to other users who can use the license either within the network or remotely. Once the license checkout period expires, the License Management Tool utility automatically "checks in" the license and makes it available to other users.

Checking out the License

Go to the Start menu, search for "license," and click the SELECT License Tool to open the License Management Tool dialog.

ConstructSim i-model Publisher

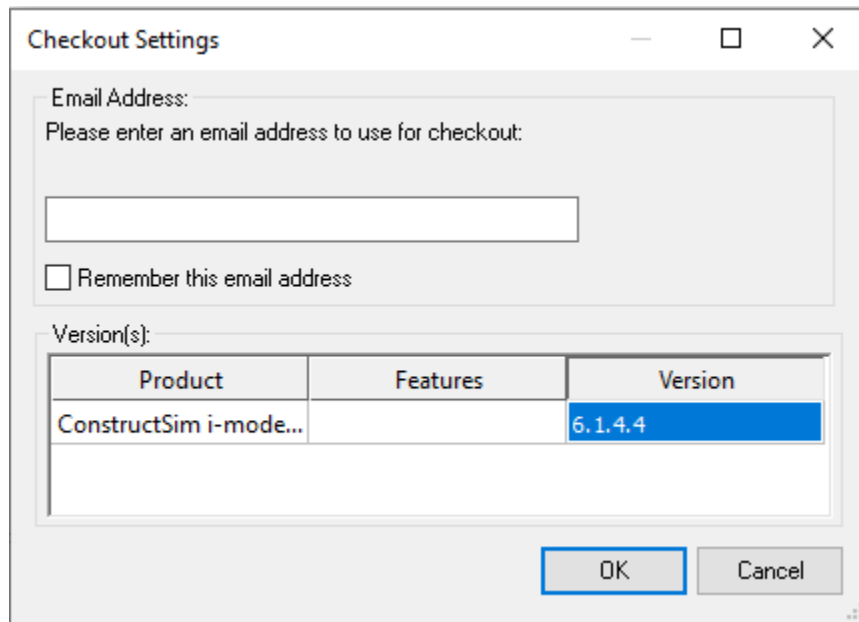
Activating ConstructSim i-model Publisher



In the License Management Tool dialog, go to the License Checkout tab and select ConstructSim i-model Publisher and click CheckOut. The Checkout Settings dialog opens.

ConstructSim i-model Publisher

Activating ConstructSim i-model Publisher

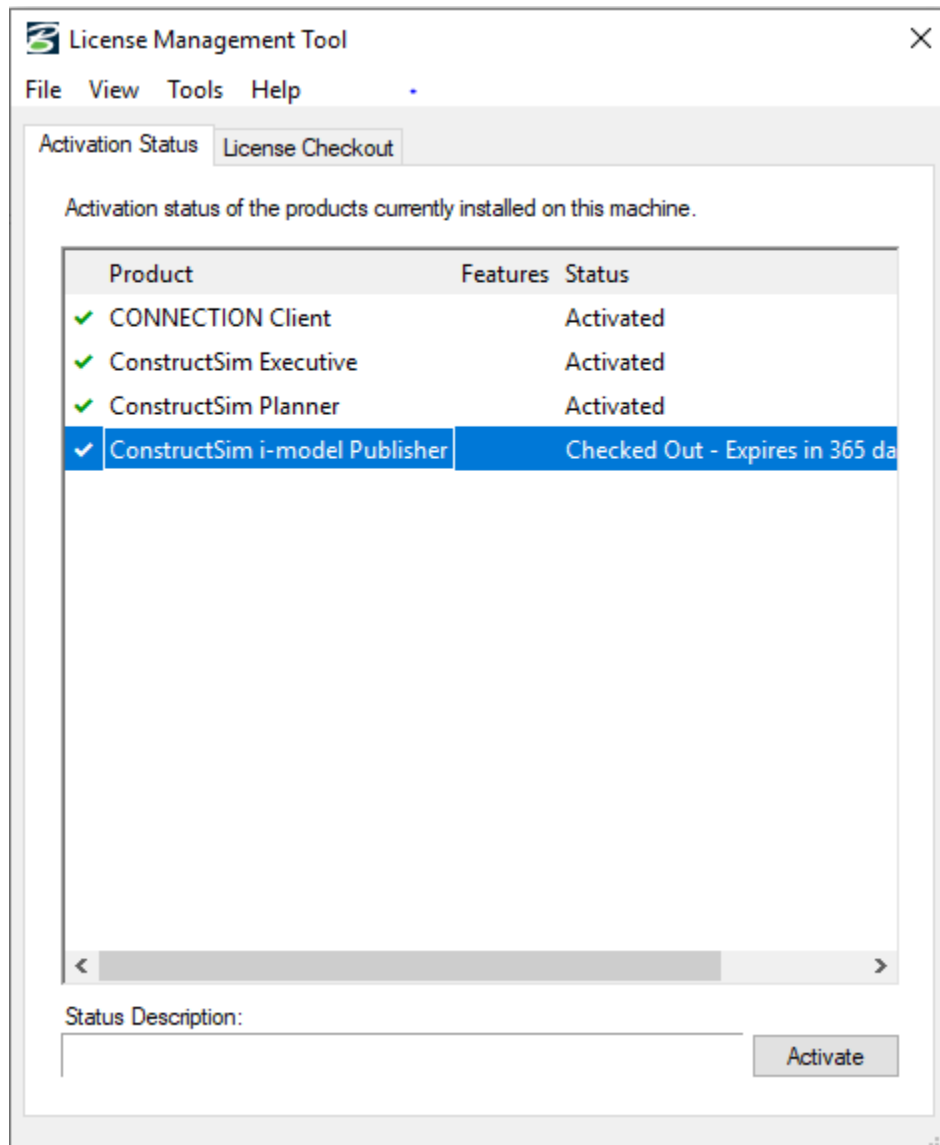


Enter your email address, select the version you want and click OK. The Checkout Results dialog opens displaying the status of the check out. Status column should show Success.

Click the Activation Status tab and see that your license is checked out.

ConstructSim i-model Publisher

Activating ConstructSim i-model Publisher



Click Activate.

Using the Product Activation Wizard

The Product Activation Wizard is designed to step you through the product activation process. After a product is installed, you must obtain a license and then activate that license. Obtaining the license alone is not enough to complete the process. This wizard eliminates the confusion and makes it clear that obtaining a license and activating a product are two essential steps.

To open the Product Activation Wizard, go to the Start menu, search for "license," and open the SELECT License Tool. In the License Management Tool dialog that opens, select Tools > Product Activation Wizard.

The Product Activation Wizard opens and the first screen offers these product activation options:

- SELECT subscriber activating against a hosted (Bentley) SELECTserver

ConstructSim i-model Publisher

Activating ConstructSim i-model Publisher

- SELECT subscriber with a deployed (local) SELECTserver
- NON-SELECT or Node Locked user
- Evaluation Only - No license information

The wizard steps you through the activation process based on the options selected.

SELECT Subscriber Activating Against a Hosted (Bentley) SELECTserver

If you are activating against a hosted (Bentley) SELECTserver, the Server Name is pre-populated but you must provide the proper Activation Key - see <http://www.bentley.com/activate> for more information regarding this.

1. Select **SELECT subscriber activating against a hosted (Bentley) SELECTserver** and click **Next**.

The **Activating against a SELECTserver** page opens.

2. Enter the site activation key in the **Site Activation Key** field.
3. If you are using HTTPS, turn on **HTTPS (SSL)**.
4. If you are using a proxy server to connect to the SELECTserver, click the **Proxy** button and fill in the Proxy Server information, then click **OK**.
5. Click **Test Connection** to verify the connection to the SELECTserver.
6. Click **Next**.
7. On the **Country of Use** page, select the country where you will be using this product and click **Next**.

The **Wizard Selections** page displays the information provided on the previous pages.

8. Review the information and click **Finish** to activate the product.

SELECT Subscriber with a Deployed (local) SELECTserver

If you are activating against a local SELECTserver, you must provide the proper Server Name and Activation Key. The Server Name and Activation Key, along with any proxy configuration information, can be obtained from your Site Administrator.

1. Select **SELECT subscribers with a deployed (local) SELECTserver** and click **Next**.

The **Activating against a SELECTserver** page opens.

2. Enter the name of the server in the **Server Name** field.
3. Enter the site activation key in the **Site Activation Key** field.
4. If you are using HTTPS, turn on **HTTPS (SSL)**.
5. If you are using a proxy server to connect to the SELECTserver, click the **Proxy** button and fill in the Proxy Server information, then click **OK**.
6. Click **Test Connection** to verify the connection to the SELECTserver.
7. Click **Next**.
8. On the **Country of Use** page, select the country where you will be using this product and click **Next**.

The **Wizard Selections** page displays the information provided on the previous pages.

9. Review the information and click **Finish** to activate the product.

NON-SELECT or Node Locked User

If you are not a Bentley SELECT subscriber and you are activating your product, you are presented with three options:

ConstructSim i-model Publisher

Copyright

I have a license file ready to import

1. Enter the path to your license file (or **Browse** to the location of your license file) in the **License File** field.
2. Click **Next**.

The **Wizard Selections** page displays the information provided on the previous pages.

3. Review the information and click **Finish** to activate the product.

I have an activation key

1. Enter the site activation key in the **Site Activation Key** field.
2. If you are using HTTPS, turn on **HTTPS (SSL)**.
3. If you are using a proxy server to connect to the SELECTserver, click the **Proxy** button and fill in the Proxy Server information, then click **OK**.
4. Click **Test Connection** to verify the connection to the SELECTserver.
5. Click **Next**.

The **Check out license now?** page displays.

6. Enter your email address in the **Email Address** field.
7. Select the product to be activated (if not pre-populated) in the **Product Name** field.
8. Enter the product version number (XXX.XXX.XXX.XXX, if not pre-populated) in the **Product Version** field.
9. Click **Next**.
10. On the **Country of Use** page, select the country where you will be using this product and click **Next**.

The **Wizard Selections** page displays the information provided on the previous pages.

11. Review the information and click **Finish** to activate the product.

I do not have any license information

1. The product will run in evaluation mode.
2. Click **Go To Bentley.com** to request activation information.

Evaluation Only - No License Information

1. The product will run in evaluation mode.
2. Click **Go To Bentley.com** to request activation information.

Copyright

Copyright (c) 2020, Bentley Systems, Incorporated. All Rights Reserved.

Index

I

iModel publishing
 inside End-to-End Data Run
 4
 intra-week workflow 5

L

License
 management 9

O

open iModel 6
overview 3

P

product activation 8
product activation wizard 12

S

software requirements 3
synchronize changes 4

T

troubleshooting licensing issues
 8